

SLA Self-Drill

Fastening aluminum composite panels to aluminum

- 304 austenitic stainless steel provides the optimum corrosion resistance performance.
- SLA3 TORX® T20W drive makes installation fast and easy.
- SLA5 Hex washer head provides driving stability.
- Resistant to overdrive.

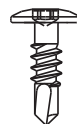
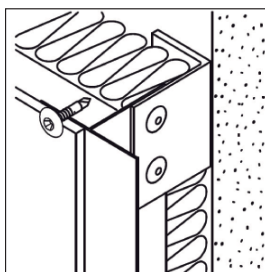
- Resistant to back out.
- Low profile provides for an aesthetically pleasing façade.
- Custom color matching to your panel is available with scratch resistant coating

Application

SLA3 Self-Drill
No washer
Aluminum composite panels to aluminum framework

Drilling Capacity (Aluminum): .071"-.118"
 Grip Range: 0.236"

Material: 304 Austenitic Stainless Steel A2,
 Material Number 1.4301, AISI 304

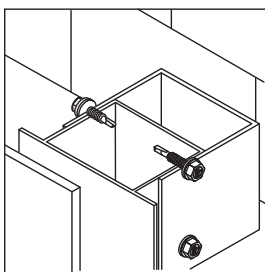


Drive: TORX® T20W
 Head Dia: .470"
 Dia Nominal: .190"
 Tensile: 1765 lbs
 Shear: 1177 lbs
Pull-out Strength
 AIMg 1.8 mm (.071"): 441 lbs
 AIMg 2 mm (.079"): 517 lbs

SLA5 Self-Drill
No washer
Aluminum to aluminum framework

Drilling Capacity (Aluminum): .196"
 Grip Range: .750" .160" - .240"
 .827" .240" - .315"

Material: 316 Austenitic Stainless Steel A4,
 Material Number 1.4401, AISI 316



Drive: 5/16 AF Hex Washer Head
 Head Dia: .413 nominal
 Dia Nominal: .236"
 Tensile: 2250 lbs
 Shear: 1575 lbs
Pull-out Strength
 AIMg 1.8 mm (.071"): 4850 lbs
 AIMg 2 mm (.079"): 5800 lbs

Notes

Dimensions are nominal unless noted. The specific job conditions should be considered and appropriate safety factors applied when specifying the proper fasteners.

Selection

Description	Material No.	Code					
		Type	Clamping Length (mm)	Material	Head	Diameter (mm)	Length (mm)
10-16 x 3/4" SD2	1025055	SLA3/	6-	S-	D12-	4,8X	19
1/4-13 x 3/4" SD2	1102034	SLA5/	4-6-	S4-	-	6X	19
1/4-13 x 7/8" SD2	957352	SLA5/	6-8-	S4-	-	6X	21

Installation

0-2000 rpm screw gun equipped with depth sensing nose piece.
 Use of T20W TORX drive bit is required.

Use of impact guns or hammer drills is not recommended.

Options

Painted

