

SA6/TDA

Architectural cladding fasteners

- 304 austenitic stainless steel
- Ensures compatibility between fastener, panel and framework

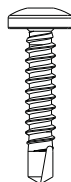
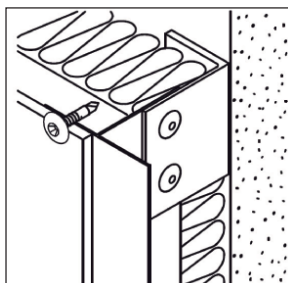
- Variety of low profile head designs available
- Available in self-drilling or self-tapping to meet your installation preference

Application

**SA6 PHL Pan Head  
#10-16 Self-Drill  
No washer  
Panel to Aluminum  
Aluminum to Aluminum**

Drilling capacity: Max .118"

Material: 304 Austenitic  
Stainless Steel



Drive: #2 Phillips  
Head Dia: .365"  
Thread Major Dia: .182"  
Thread Minor Dia: .134"

**Strength (ult.):**  
Tensile: 1420 lbs  
Torsional: 50 in-lbs  
Shear: 1270 lbs

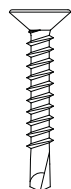
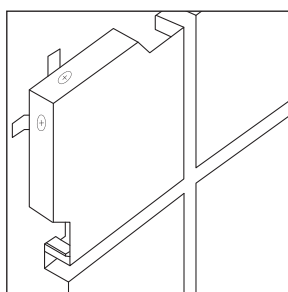
**Pull-out Strength - Aluminum**  
.057" Aluminum: 465 lbs

**Assembled Shear Strength**  
1/8" Alum. Bracket to  
.057" Alum 687 lbs

**SA6 PHL Flat Head  
#10-16 Self-Drill  
No washer  
Panel to Aluminum  
Aluminum to Aluminum**

Drilling capacity: .196-.035"

Material: 304 Austenitic  
Stainless Steel



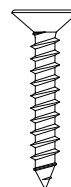
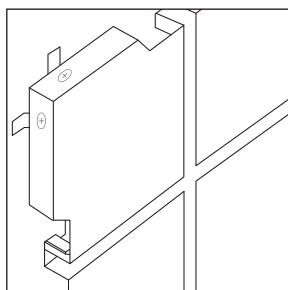
Drive: #2 Phillips  
Head Dia: .346"  
Thread Major Dia: .185"  
Thread Minor Dia: .132"

**Strength (ult.):**  
Tensile: 1760 lbs  
Torsional: 55 in-lbs  
Shear: 1182 lbs

**Pull-out Strength - Extruded Aluminum:**  
1/8" (.125"): 823 lbs

**TDA PHL Flat Head  
#10 Self-Tapping  
Type A  
No washer  
Cladding Panel to Metal  
Metal to Metal**

Material: 304 Austenitic  
Stainless Steel



Drive: #2 Phillips  
Head Dia: .346"  
Thread Major Dia: .185"  
Thread Minor Dia: .132"

**Strength (ult.):**  
Tensile: 1760 lbs  
Torsional: 55 in-lbs  
Shear: 1182 lbs

**Pull-out Strength - Extruded Aluminum:**  
1/8" (.125"): 920 lbs pre-drill #21 (.159")

Notes

Dimensions are nominal unless noted. The specific job conditions should be considered and appropriate safety factors applied when specifying the proper fasteners.

Selection

Description	Material No.	Code						
		Type	Clamping Length (mm)	Head Style	Drive	Diameter (mm)	Length (mm)	
SA6 PHL Pan Head	10-16 x 3/4	1269126	SA6/	6-	D9-	PH2-	4,8X	19
SA6 PHL Flat Head	10-16 x 3/4	1247450	SA6/	6-	-	PH2-	4,8X	19
	10-16 x 1	1247448	SA6/	11-	-	PH2-	4,8X	25

Description	Material No.	Code					
		Type	Material	Drive	Diameter (mm)	Length (mm)	
TDA PHL Flat Head	10 x 3/4 Type A	1247525	TDA-	S-	PH2-	4,8X	19
	10 x 1 Type A	1247523	TDA-	S-	PH2-	4,8X	25

Installation

Fasteners should provide for a minimum of 3 fully developed threads through the metal substrate.

Tools: 0-2000 rpm screw gun equipped with depth sensing nose piece.

**Use of impact guns or hammer drills is not recommended.**