

SSO-D15 Rivet

Fastening cladding panels to aluminum or steel framework

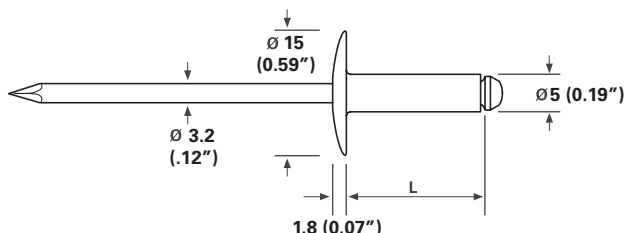
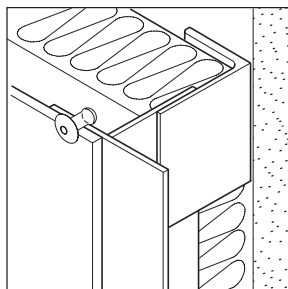
- For installation of any type of facade panel (HPL, Fiber Cement, ACM, or others) to aluminum furrings
- Fast, reliable, and secure setting with every fastener

- Won't loosen in high vibration and fatigue applications

Application

**SSO-D15 Rivet**  
 Attach high-performance cladding panels to aluminum or steel sub-frames

Material  
 Body: 316 Stainless Steel (A4)  
 Mandrel: 316 Stainless Steel (A4)



Nom. Tensile: 6500N (1461 lbs.)  
 Nom. Shear: 5300N (1191 lbs.)

Pull-out Strength-Extruded Aluminum  
 AlMg 3 2.0mm (0.078"): 2180N (490 lbs.)

Pull-out Strength - 55 KSI Yield Sheet Steel  
 18ga. (.048"): 2296N (516 lbs.)

Notes

Dimensions are nominal unless noted. The specific job conditions should be considered and appropriate safety factors applied when specifying the proper fasteners. Pull-out strength values obtained with 5.1 mm (.0201") pre-drill.

Selection

Description	Material No.	Code	Grip Range
5 x 14mm	1262436	SSO-D15-50140-A4	6.0-9.5 mm (.236-.374")
5 x 18mm	1262437	SSO-D15-50180-A4	9.0-13.5 mm (.354-.531")
5 x 22mm	1262439	SSO-D15-50220-A4	13.0-18.0 mm (.511-.708")

Installation

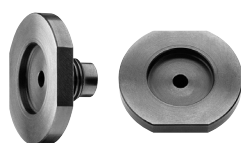
5.1mm (0.201") pilot hole (#7) required in aluminum framework for fixed point. All other holes depend on material. Check the attachment method instructions provided by the cladding panel manufacturer. Recommended installation tool is the Gesipa Accubird, with special nosepiece for SO.

Accubird® Pro Rivet Gun



Item# 1433447

Nosepiece for SSO



Item# 1291200

Drill Guage (DG)



- Drilling Guage for centered drill holes including drill bit Ø 5,1 mm.

**Replacable top pieces with different diameters available.**

Order Code: DG-146x20-7,0	1320657
DG-146x20-8,0	1320658
DG-146x20-9,0	1320659
DG-146x20-10,0	1321704