

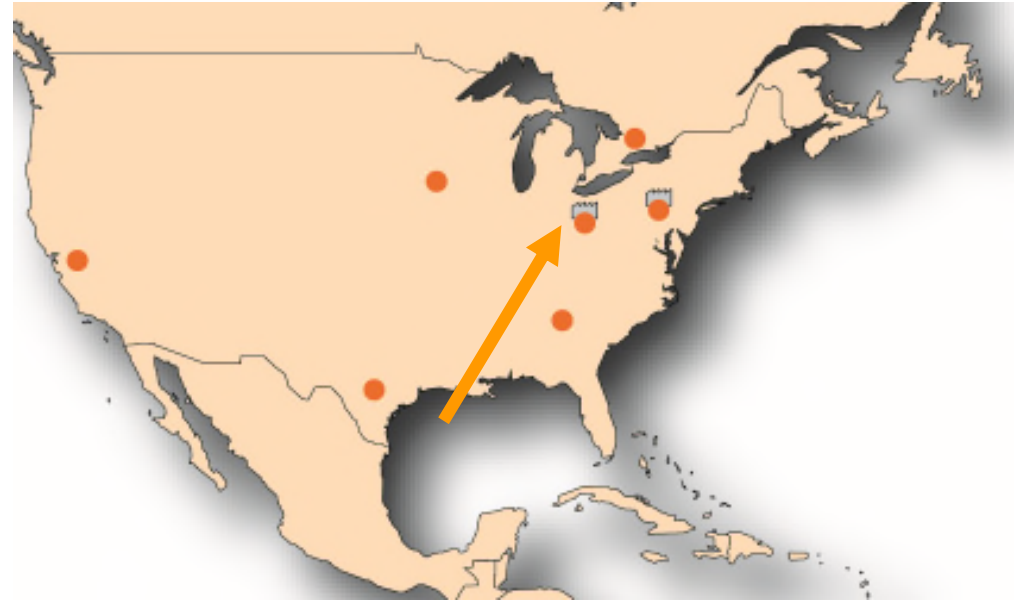
Welcome to SFS intec, Inc. Medina, OHIO



Turn ideas into reality. **SFS** intec

Medina Overview: Facts & Figures

- ➔ Location: Medina, OH
- ➔ Size: 172,000sqf
- ➔ Employees: >160
- ➔ Basic technologies: Cold forming, Mechanical fastening, Machining
- ➔ Certification: ISO 9001
ISO/TS 16949, ISO 17025
- ➔ Raw material usage: 10 mio. lbs annual (2014)
- ➔ Customer Base: Automotive, Industrial



Turn ideas into reality. **SFS** intec

History - Site Medina

2000: -Move into new facility and start AP production

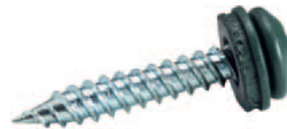
- Receive QS9000 certification



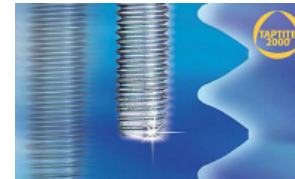
2003: -Receive ISO/TS 16949 Certification



2005: -Start up Bimetal fastener production



2009: -Implementation trilobular fastener production capabilities



2013: -Building expansion



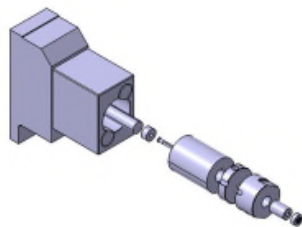
2002: -Start tool manufacturing line

- Implementation metallographic lab



2004: - Localization multi station tool design

- Implementation stainless steel manufacturing capabilities



2007: -Start up internal belt heat treat



2012: - Start up High grade cleaning line

- Ramp up ABS valve components production



2014: - Start up ball screw drive production

- Receive ISO 17025 certification for lab



Medina Plant profile

Product range

Braking components
Torsion bars
Engine components
Construction fasteners

Capabilities

DD (wire Ø 2 - 6, fasteners 3 - 6)
MSTK (wire Ø 3 - 8)
MSTM (wire Ø 5 - 20)
MSTG (wire Ø 10 - 29)

Wire: Ø 2 - 29 (C + S steel, Aluminum)
Flange: 45
Length: 180 (Automotive)

Competences

Engineering: Quoting, Tool Design, APQP, Process development, Measuring
Tool: Manufacturing, Service
Heading: DD, MST, Open Die
2nd Op: Rolling, Pointing, Welding, 100% Sorting
Machining: Indexing, Cam Lathe, Linear transfer, Grinding
WHOT: High grade cleaning, Tumbling, Blasting, Belt furnace, Batch furnace
Assembly: Fully automated assembly line, Packaging, Labeling
Certification: ISO 9001, ISO/TS 16949, ISO 17025

