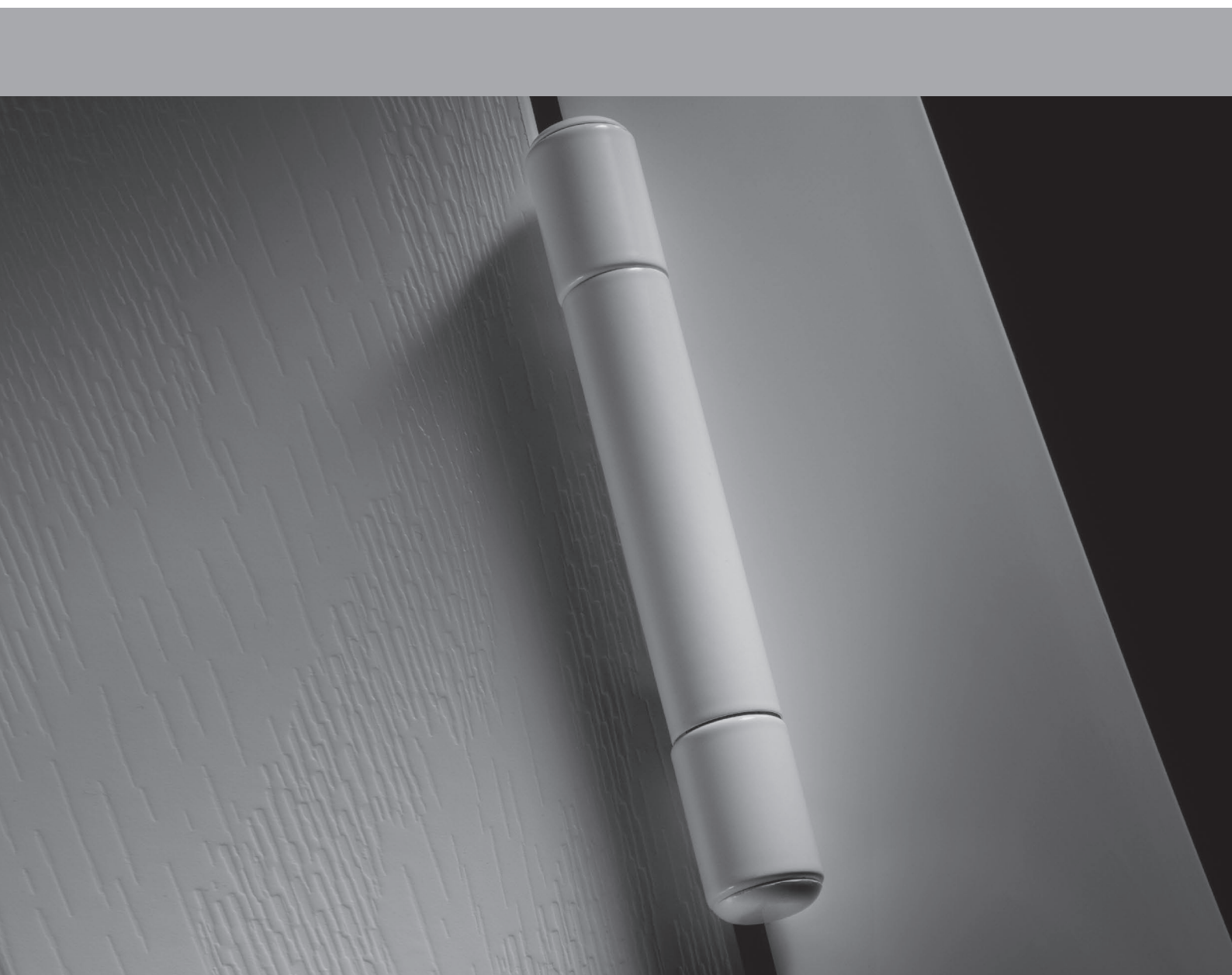
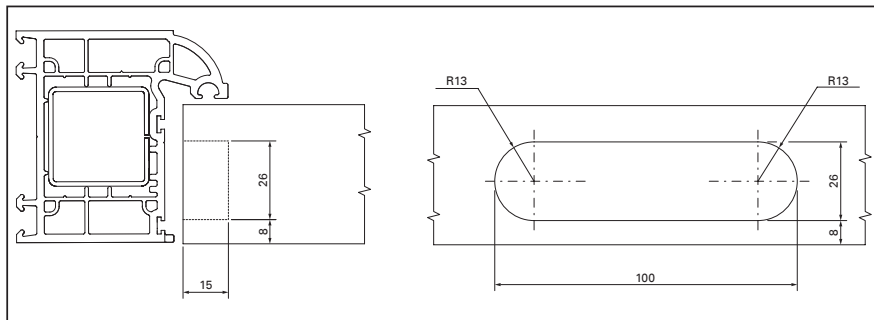


**Istruzioni di montaggio e regolazione  
Dynamic 2D-C**

**Fitting and adjustment instructions  
Dynamic 2D-C**



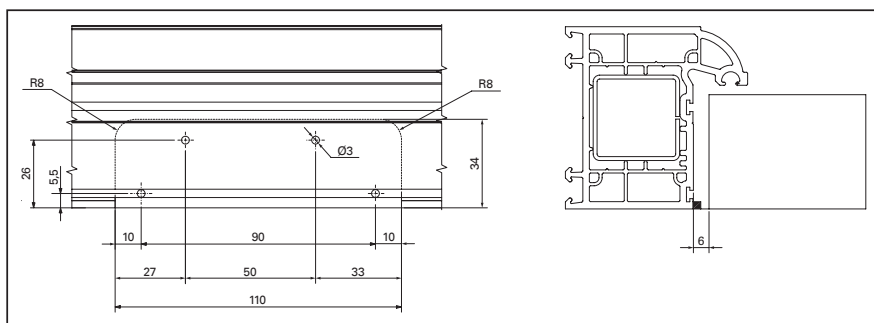
### Schema di fresatura anta - Milling diagram for sash



Effettuare la fresatura secondo lo schema.

Mill in accordance to the diagram.

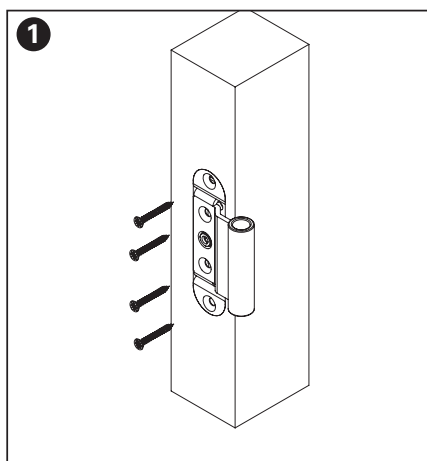
### Fresatura telaio - Milling diagram for frame



Effettuare la fresatura e la foratura secondo lo schema o manualmente con dima SFS intec o con CNC.

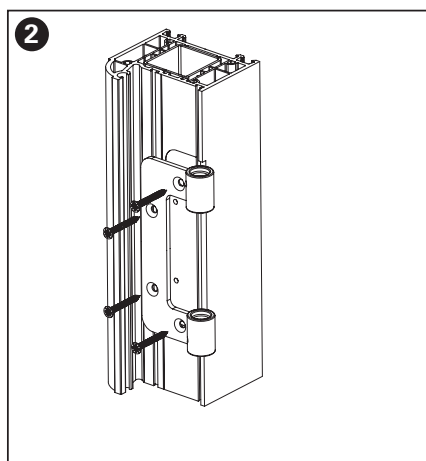
Mill and drill the frame using SFS intec jig or CNC to the dimensions shown.

### Istruzioni di montaggio - Fitting instructions



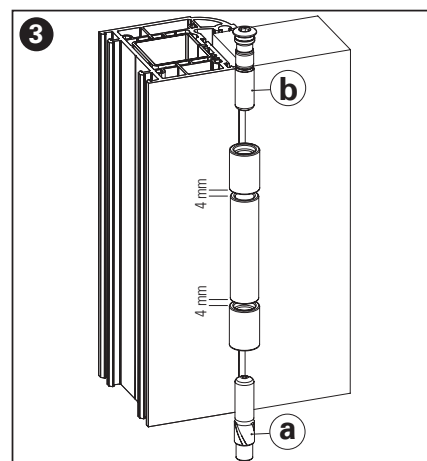
Inserire la femmina nell'anta e fissarla con 4 viti.

Fit in the female part in the sash and fasten with 4 screws.



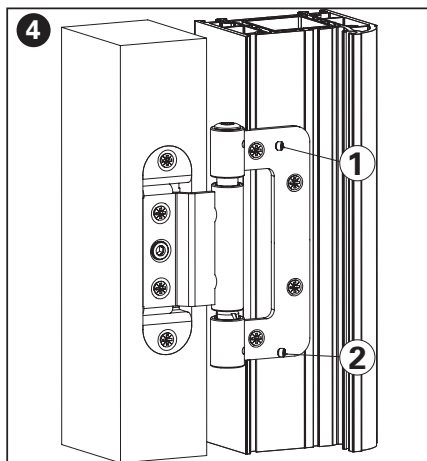
Fissare il maschio sul telaio con 4 viti.

Fit in the male part in the frame and fasten with 4 screws.



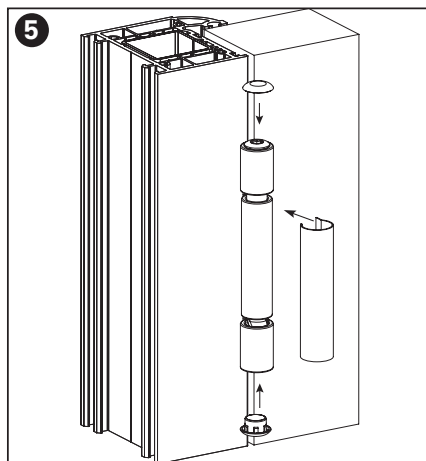
Avvitare a fondo il perno con testa (b) nell'anello superiore. Avvitare il perno (a) fino a raggiungere la distanza indicata.

Drive in the pin with head (b) into the upper ring. Drive in the pin (a) until you achieve the dimension as shown in figure 3.



Aprire l'anta ed avvitare i grani di sicurezza (1) e (2)

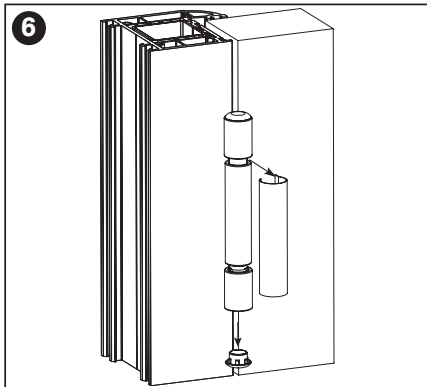
Open the door and screw in the security screws marked (1) and (2).



Inserire tappi e cappuccio come indicato in fig. 5.

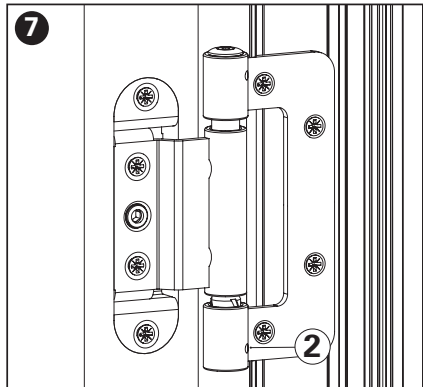
Insert caps and cover cap as shown in fig. 5.

## Istruzioni di regolazione - Adjustment instructions



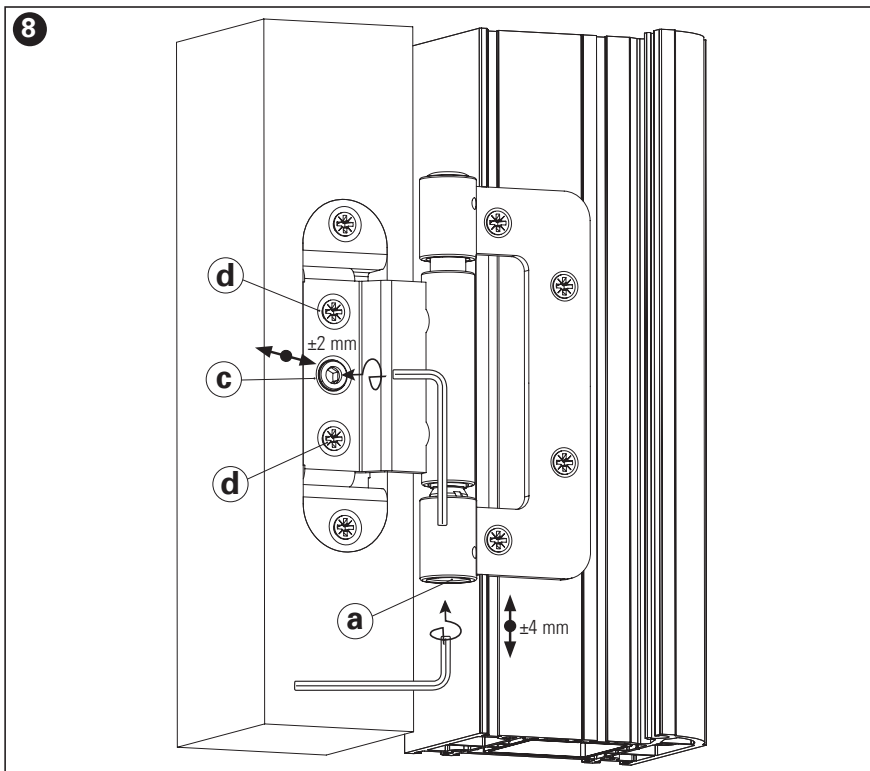
Togliere il tappo inferiore e il cappuccio come indicato in fig. 6.

Remove the lower cap and the cover cap as shown in fig. 6.



Aprire l'anta e allentare il grano di sicurezza (2).

Open the door and unscrew but do not fully remove the lower security screw marked (2).



### Regolazione laterale

Per aumentare l'aria tra anta e telaio allentare le viti (d) regolare con il grano (c) con chiave a brugola da 4mm e bloccare le viti (d).

Per ridurre l'aria agire sul grano (c) e bloccare le viti (d).

### Regolazione in altezza

Agire sulla vite (a) con chiave a brugola da 4mm.

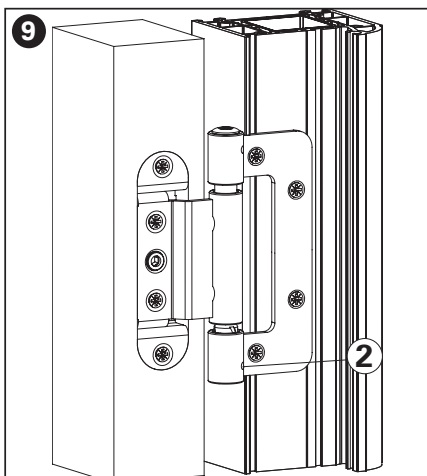
### Horizontal adjustment

To increase the air gap between sash and frame loosen screws (d) adjust by turning screw (c) with a 4mm Allen key and tighten screws (d).

To reduce the air gap turn screw (c) and tighten screws (d).

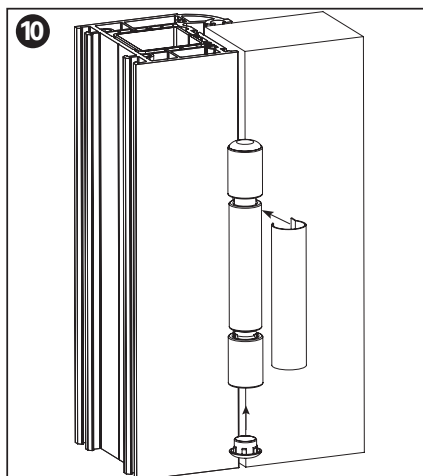
### Height adjustment

Adjust by turning screw (a) with a 4mm Allen key.



Aprire l'anta e avvitare il grano di sicurezza (2).

Open the door and tighten security screw (2).



Inserire il tappo inferiore e cappuccio come indicato in fig. 10.

Replace the lower cap and the cover cap as shown in fig. 10.